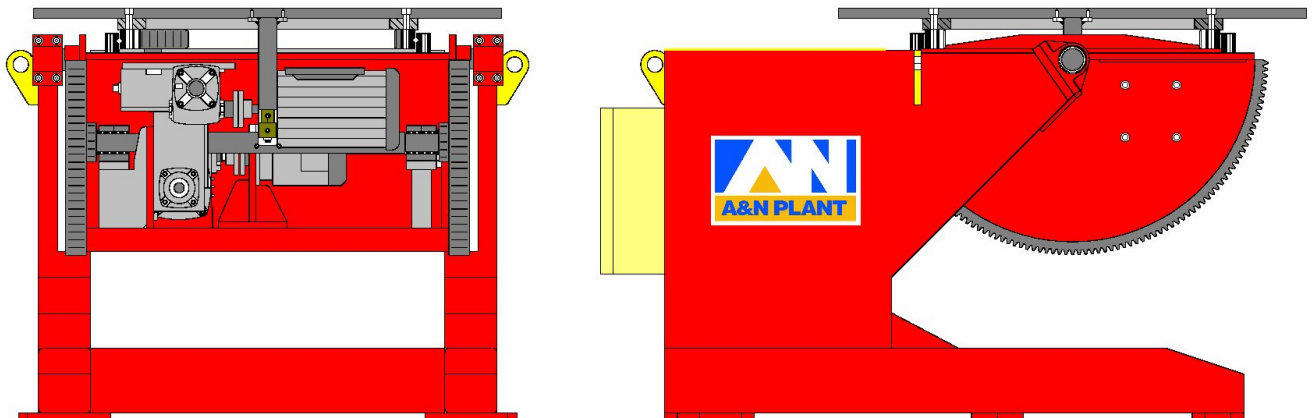




**Specification Data**  
**Positioners**  
**Capacity : 5 Tonnes**  
**Fixed Height**  
**Model: RP5T**

**A&N Positioner Model RP5T Series** is a 5 metric tonne capacity designed to give a maximum positioning benefit by using tilt and rotation of the table for easy positioning of the workpiece. The table is machined with four radial slots for anchor bolts and centric marking on the surface table, a high precision slewing ring is mounted below the table to give a smooth and constant rotation during operation. Power driven by AC motor controlled by AC inverter control box. A variable speed controlled by a standard control pendant with low voltage push button and potentiometer with a 6-metre control cable built in. Tilt movement is electrically powered driven by 2.2 KW AC motor with Dynamic Braking through reducer gearbox. Built in with 1200amps rotary clamp to ensure good earthing to the welding power source.

There are various table diameters available at 900mm, 1200mm and 1500mm or square table (Specify table diameter when ordering)



**Specifications**

Model:	RP5T- EA-D1500
Pendant Control:	24VAC circuit, push button with 6metre cable
Input voltage:	400V/3phase/32amps/50Hz (Specify voltage requirement when ordering)
Turning Capacity:	5-metric ton at 300mm
Rotation Speed:	0.08 to 0.82 rpm
Tilting Capacity:	5-metric ton at 300mm
Tilt Range:	0 to 135 Degrees
Tilt Speed:	135 Degree in 113 second
Rotation Drive Motor:	2.2 KW motor
Rotation Drive Control:	2.2 KW AC inverter
Tilt Drive Motor:	2.2KW motor c/w brake

..... [www.anplant.com](http://www.anplant.com) .....

RP5T Series (5 Tonne)

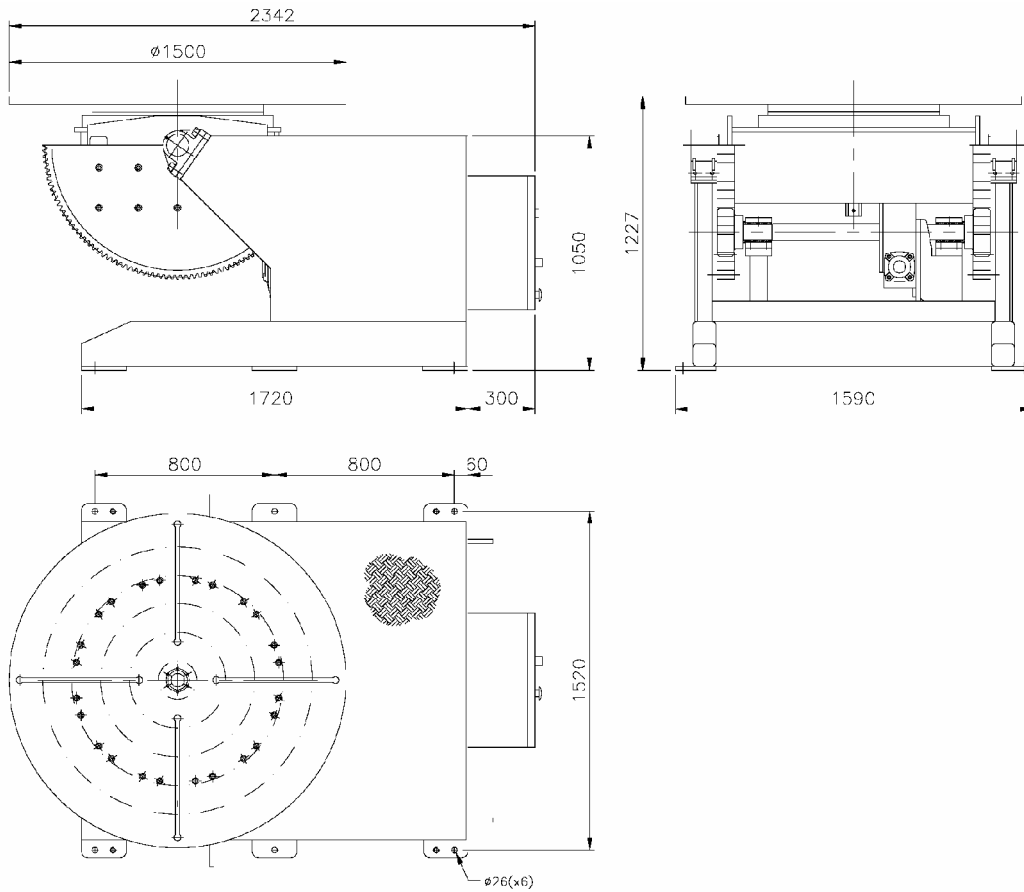
Estimate weight: 3100Kgs

Optional Item

Following Optional items are available and have to be factory install


- Encoder
- Tachometer
- Foot Switch

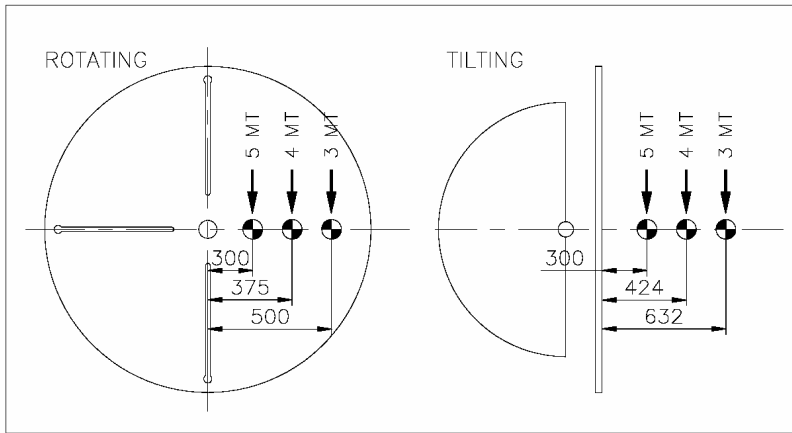
### Dimensions



..... [www.anplant.com](http://www.anplant.com) .....

RP5T Series (5 Tonne)

Load Chart 



**DIMENSIONAL SPECIFICATIONS**

<b>MODEL:</b>			
A = Max Height			
B= Max Width			
C= Center hole distance (W)			
D= Center Hole distance (L)			
E = Center Hole distance			
F = Max Length			
G = Center Hole distance			
H = Table Diameter			

Note: Scope of cutting table, rail base support and civil works (By Others)

**OPTIONS**

Tachometer	<input checked="" type="checkbox"/>			
Foot Switch	<input checked="" type="checkbox"/>			
Encoder	<input checked="" type="checkbox"/>			
3 Jaw Chuck	<input checked="" type="checkbox"/>			
Traverse Torch	<input checked="" type="checkbox"/>			

Optional items are available and have to be factory install.

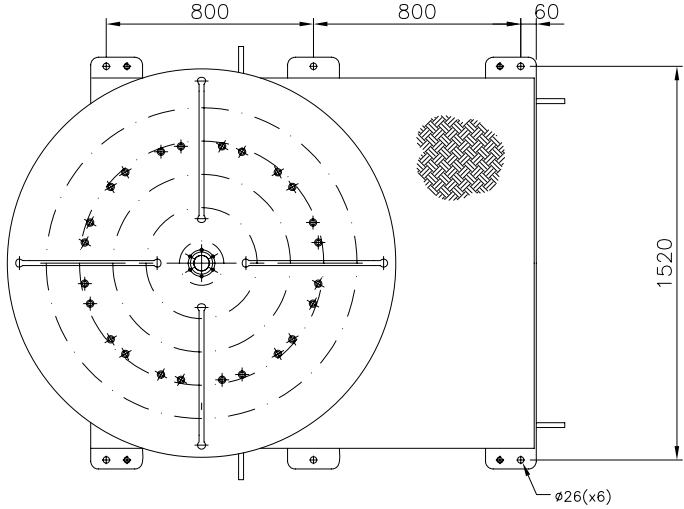
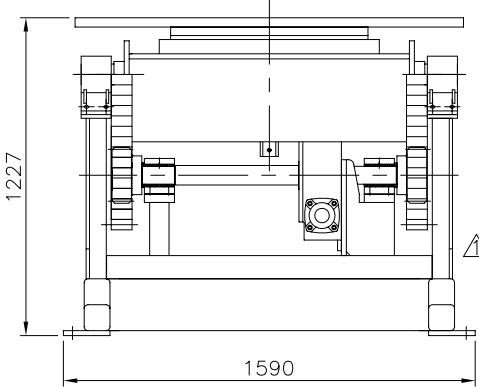
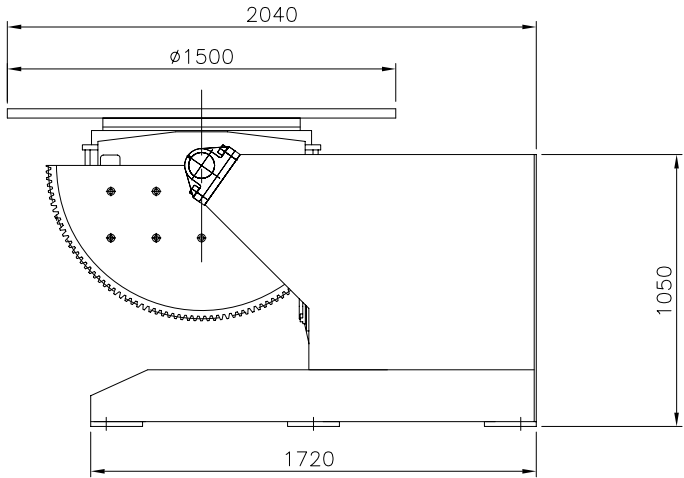
▲ Specify requirement      ■ Optional      □ Standard      □ Specify quantity

..... [www.anplant.com](http://www.anplant.com) .....

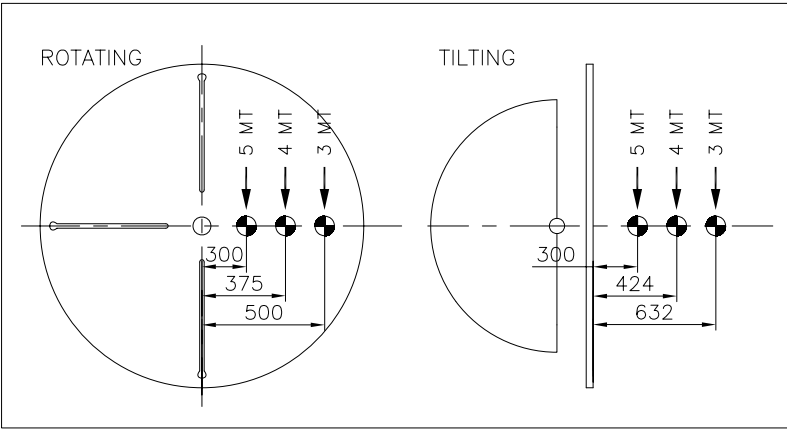
RP5T Series (5 Tonne)

Specification for Positioner

1	Model	RP5T-XA-D1500
2	Capacity (Turning)	5MT @300mm (Please refer to Load Chart)
3	Capacity (Tilting)	5MT @300mm (Please refer to Load Chart)
4	Electrical Panel	No
5	Rotation Speed	0.08 to 0.82rpm running at 5 to 50Hz
6	Tilt Range	0 to 135 Degrees
7	Incoming Supply	415V-3P-50Hz
8	Control Voltage	N.A.
9	Rotation Drive Control	N.A.
10	Control Means	N.A.
11	Rotation Drive Motor	1 x AC 2.2kW c/w Force Cooling
12	Rotation Drive Forced Cooling Supply	415-3P-50Hz
13	Tilt Speed	135Deg in 11.3sec
14	Tilt Drive Motor	1 x AC 4kW c/w Brake
15	Tilt Drive Brake Supply	415-3P-50Hz
16	Earthing	800A
17	Surface Preparation	Gritblast to SA2.5
18	Painting	2 coats Zinc Phosphate, 1 coat Polyurethane
19	Color	RAL 3003 Red
20	Qty	2 units
21	Est. Weight	2600 Kg



Load Chart



ALL DIMENSIONS IN MM, UNLESS OTHERWISE SPECIFIED.

<p><b>A&amp;N PLANT</b> ROTATORS - COLUMN BEAMS - POSITIONERS</p>		PROJECT/MODEL : RP5T-XA-D1500	
DRAWN Kris	NAME Kris	DATE 23-10-06	CLIENT : A&N Plant
APPROVED		DWG. NAME : POSITIONER GENERAL ARRANGEMENT	
		DWG. NO. : AN-3791-GA09	
		SCALE: N.T.S.	
		REVISION: 1	
		SHEET NO: 1 OF 1	
THE ORIGINAL AND ALL COPIES OF THIS DRAWING TOGETHER WITH THE COPYRIGHT THEREOF ARE THE SOLE PROPERTY OF R.P.E. PTE. LTD. SINGAPORE			