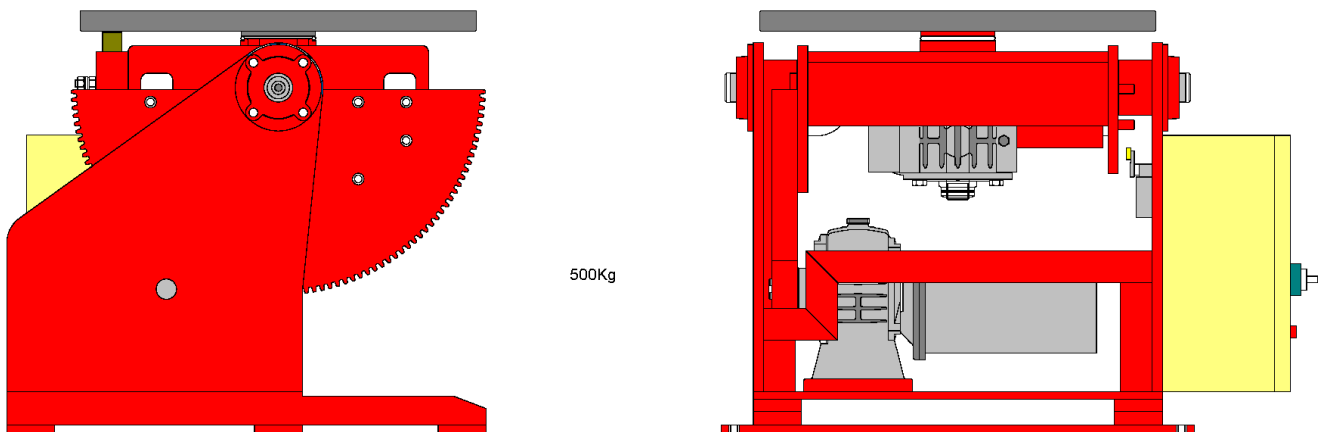




Specification Data
Positioners
Capacity: 500 Kgs
Model: RP500K

A&N Positioner Model RP500K Series is a 500Kg capacity machine designed to give maximum positioning benefit by using tilt and rotation of the table for easy positioning of the workpiece. A 620mm diameter round table is machined with four radial slots for anchor bolts and centric marking on the surface table. A set of tapered bearings are mounted below the table to give smooth and constant turning during operation. Smooth rotation is achieved by a DC motor controlled by a Thyristor PCB. The variable speed is controlled by a panel mounted potentiometer and a start/stop Footswitch. Tilt movement is electrically powered driven by 0.37 KW AC motor with Dynamic Braking through a reduction gearbox. Built in with 1000amps rotary earth clamp to ensure good earthing to the welding power source.



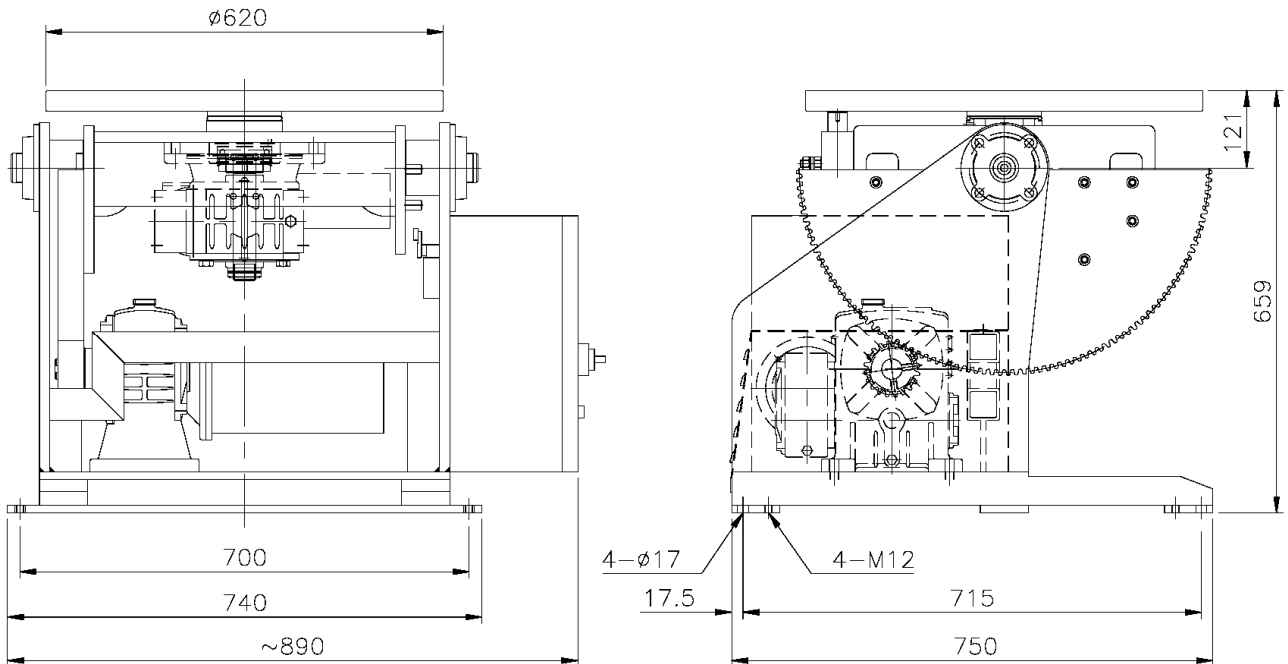
Specifications

Model:	RP500K-FC-D620
Input voltage:	400V/3phase/16amps/50Hz (Specify voltage requirement when ordering)
Turning Capacity:	500Kg at 100mm
Rotation Speed:	0.2 to 2 rpm
Tilting Capacity:	500Kg at 100mm
Tilt Range:	0 to 120 Degrees
Tilt Speed:	120 Degree in 47 second
Rotation Drive Motor:	150 W DC motor
Rotation Drive Control:	Thyristor PCB
Tilt Drive Motor:	0.37 KW motor c/w brake
Estimated weight:	400kg

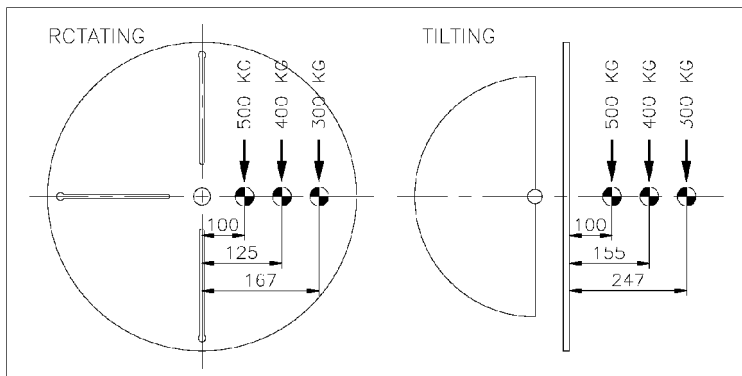
..... www.anplant.com

RP500K Series (500Kg)

Dimensions



LOAD CHART



Optional Item

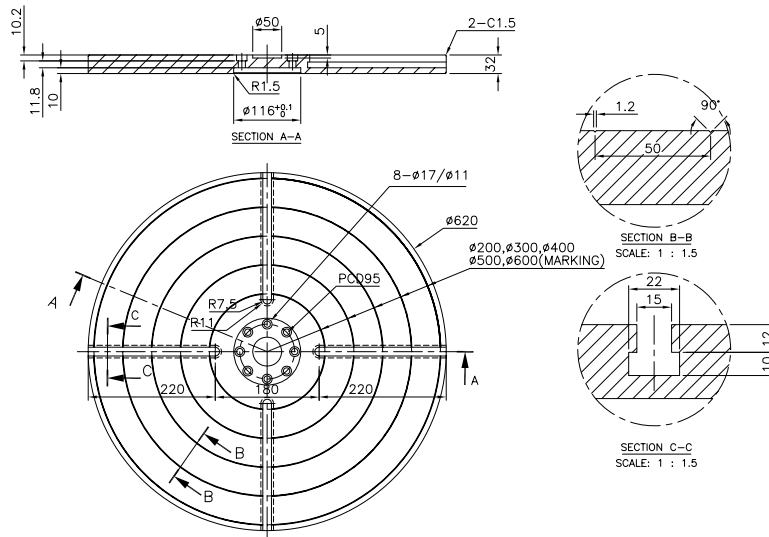
Following Optional items are available and have to be factory installed:-

- 3 Jaw-chuck
- Encoder
- Tachometer

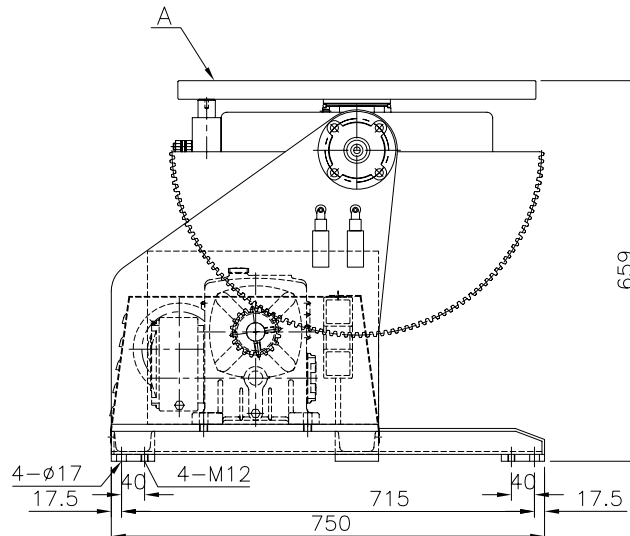
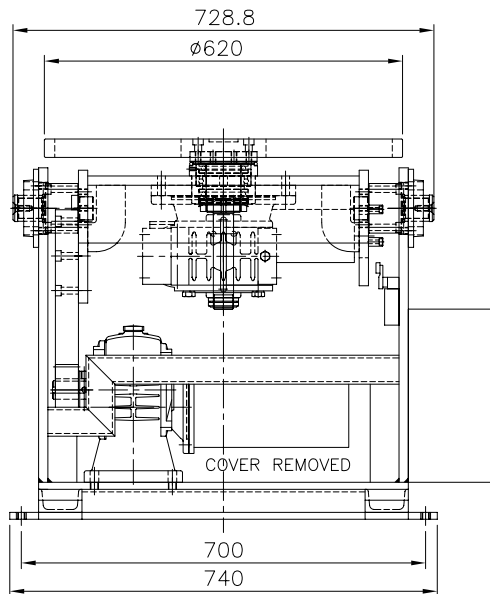
..... www.anplant.com

RP500K Series (500Kg)

Specification for Positioner



NOTE: SURFACE BLACKENING



1	Model	RP500K-FC-D620
2	Capacity (Turning)	500kg
3	Capacity (Tilting)	500kg
4	Electrical Panel	Yes
5	Rotation Speed	max. 2.0rpm
6	Tilt Range	-30°~0 , 0~90°
7	Incoming Supply	400V-3P-50Hz
8	Control Voltage	24V DC
9	Rotation Drive Control	DC Controller
10	Control Means	Via Panel, Push Button Pendant c/w 3m Cable and Foot Switch (Toggle Type) c/w 3m Cable
11	Rotation Drive Motor	1 X DC90V 150W
12	Tilt Speed	90Deg in 45sec
13	Tilt Drive Motor	1 x AC 0.37kW c/w Brake
14	Earthing	600A
15	Surface Preparation	Gritblast to SA2.5
16	Painting	2 coats Zinc Phosphate, 1 coat Polyurethane
17	Color	RAL 3003 Red
18	Qty	T.B.A.

ALL DIMENSIONS IN MM, UNLESS OTHERWISE SPECIFIED.

		PROJECT/MODEL :		RP500K-FC-D620
		CLIENT :		
DRAWN	NAME	DATE	DWG. NAME : GENERAL ARRANGEMENT	
	Kris	26-05-07		
APPROVED			DWG. NO. : SD-RP500K-FC-D620	
THE ORIGINAL AND ALL COPIES OF THIS DRAWING TOGETHER WITH THE COPYRIGHT THEREOF ARE THE SOLE PROPERTY OF R.P.E. PTE. LTD. SINGAPORE				

SCALE:
N.T.S.
REVISION:
0
SHEET NO:
1 OF 1