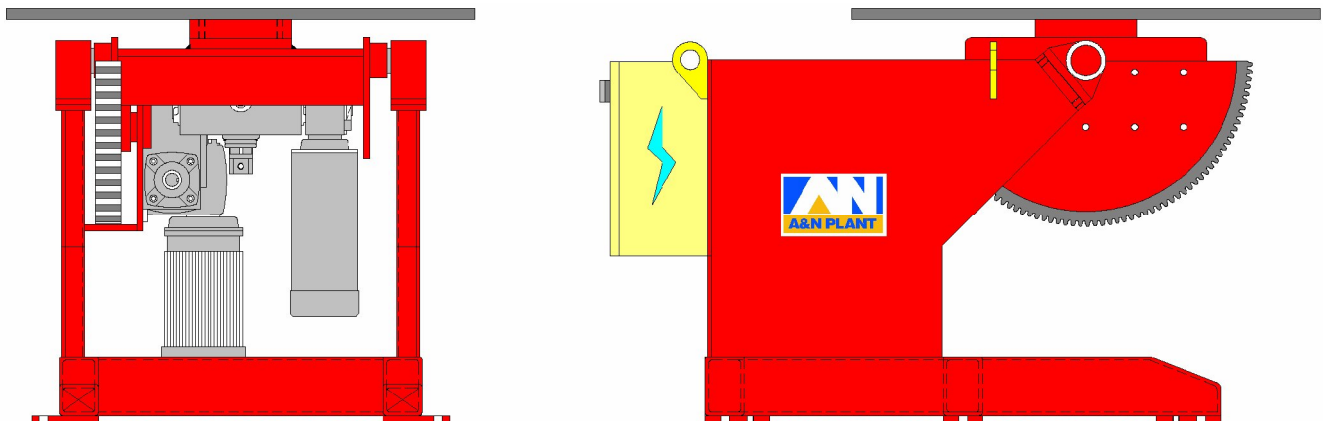




Specification Data

Positioners
Capacity : 3 Tonnes
Fixed Height
Model: RP3T

A&N Positioner Model RP3T Series is a 3 metric tonne capacity designed to give a maximum positioning benefit by using tilt and rotation of the table for easy positioning of the workpiece. The table is machined with four radial slots for anchor bolts and centric marking on the surface table, a set of tapered bearing mounted below the table to give a smooth and constant turning during operation Powered driven by AC motor controlled by AC inverter system. A variable speed controlled by a standard control pendant with low voltage push button and potentiometer with a 6-metre control cable built in. Tilt movement is electrically powered driven by 1.5KW AC motor with Dynamic Braking through reducer gearbox. Built in with 1000 amps rotary clamp to ensure good earthing to the welding power source.



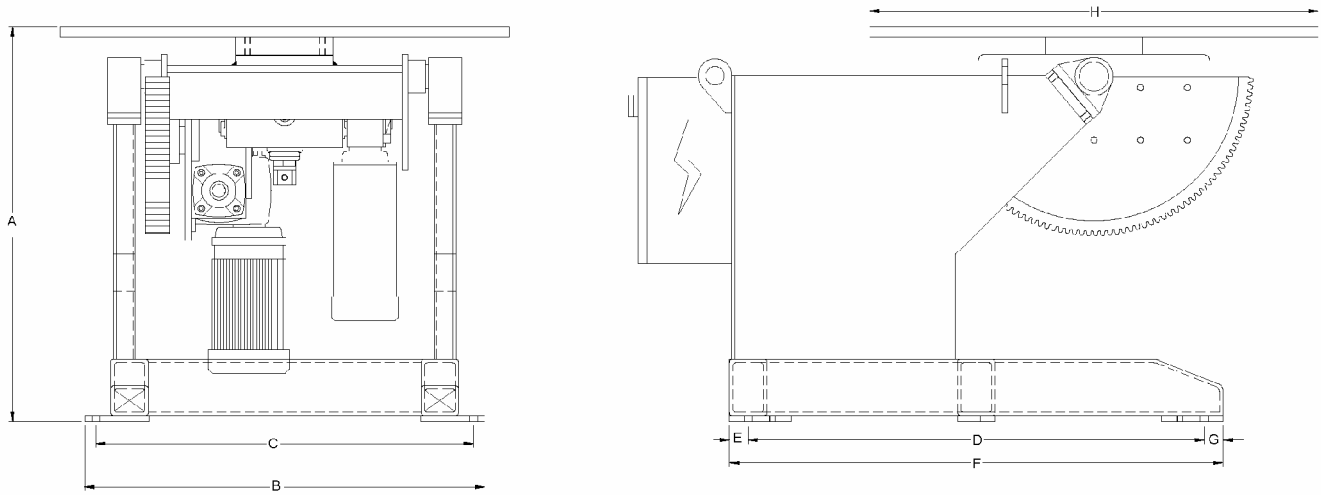
Specifications

Model:	RP3T- EA-D1200
Table Size:	Diameter of 1200mm.
Pendant Control:	24VAC circuit, push button with 6metre cable
Input voltage:	400V/3phase/16amps/50Hz (Specify voltage requirement when ordering)
Turning Capacity:	3-metric ton at 300mm (refer load chart)
Rotation Speed:	0.1 to 0.95rpm
Tilting Capacity:	3-metric ton at 300mm (refer load chart)
Tilt Range:	0 to 135 Degrees
Tilt Speed:	135 Degree at 80second
Rotation Drive Motor:	1.5 KW motor
Rotation Drive Control:	1x1.5 KW AC inverter
Tilt Drive Motor:	1.5KW c/w brake
Estimate weight:	1570Kgs

..... www.anplant.com

RP3T Series (3 Tonne)

Dimensions



DIMENSIONAL SPECIFICATIONS

MODEL:	RP3T- EA-D1200			
A = Max Height	1057			
B= Max Width	1070			
C= Center hole distance (W)	1010			
D= Center Hole distance (L)	1220			
E = Center Hole distance	50			
F = Max Length	1320			
G = Center Hole distance	50			
H = Table Diameter	1200			

Note: Scope of cutting table, rail base support and civil works (By Others)

OPTIONS

Tachometer	■			
Foot Switch	■			
Encoder	■			
3 Jaw Chuck	■			
Traverse Torch	■			

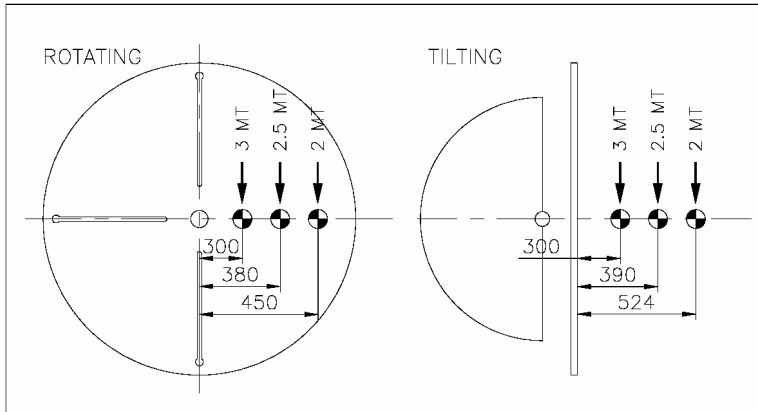
Optional items are available and have to be factory install.

▲ Specify requirement ■ Optional □ Standard □ Specify quantity

..... www.anplant.com

RP3T Series (3 Tonne)

Load Chart

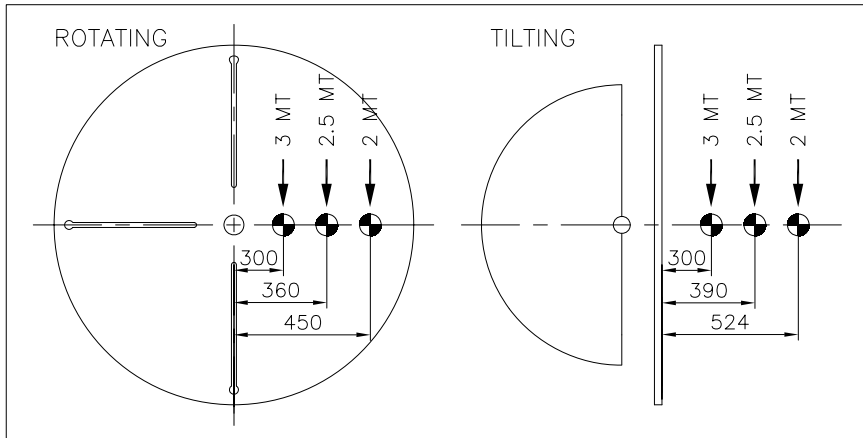


Optional Item

Following Optional items are available and have to be factory install

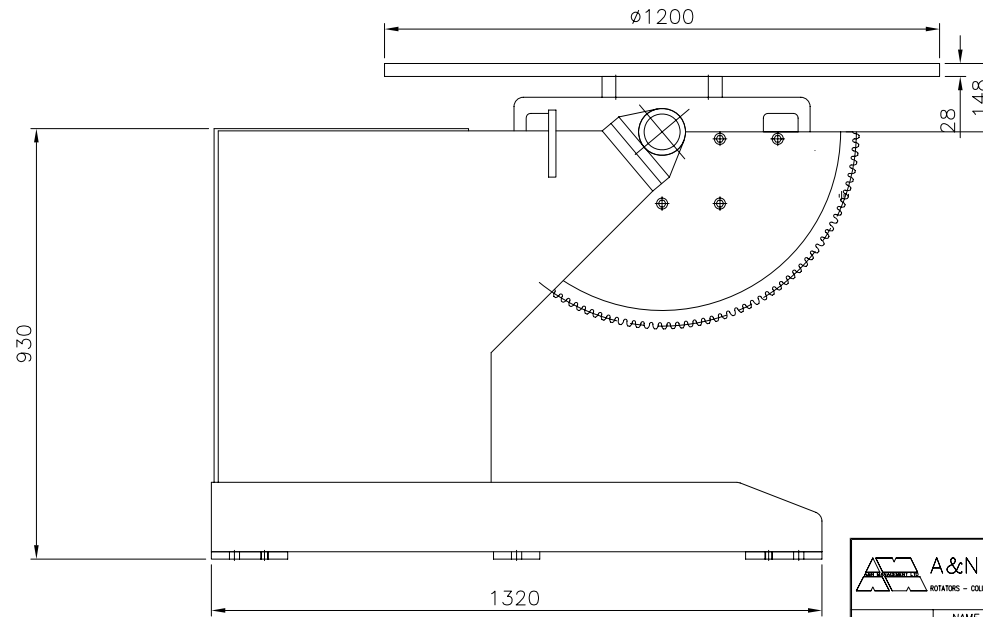
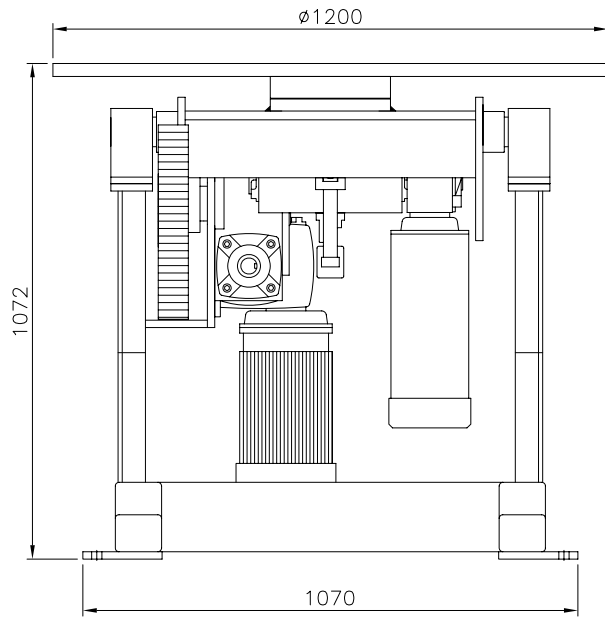
- Encoder
- Tachometer
- Foot Switch

LOAD CHART



Specification for Positioner

1	Model	RP3T-XA-D1200
2	Capacity (Turning)	3MT @ 300mm (Please refer to loading chart)
3	Capacity (Tilting)	3MT @ 300mm (Please refer to loading chart)
4	Electrical Panel	No
5	Rotation Speed	0.1~1rpm at 5-50Hz
6	Incoming Supply	415V-3P-50Hz
7	Control Voltage	N.A.
8	Rotation Drive Control	N.A.
9	Control Means	N.A.
10	Rotation Drive Motor	1 x 1.5KW c/w force cooling
11	Forced Cooling Fan Supply	230V-1P-50Hz
12	Tilt Range	0~135°
13	Tilt Speed	135° in 80sec
14	Tilt Drive Motor	1x 1.5KW c/w brake
15	Brake Supply	230V-1P-50Hz
16	Earthing	800A
17	Surface Preparation	Gritblast to SA2.5
18	Painting	2 coats Zinc Phosphate, 1coat Polyurethane
19	Color	RAL 3003 Red
20	Qty	2 units
21	Est Weight(kg)	1570KG



A&N PLANT <small>ROTATORS - COLUMN BEAMS - POSITIONERS</small>			PROJECT/MODEL : RP3T-XA-D1200	
CLIENT : A&N Plant			SCALE: N.T.S	
DRAWN Kris	NAME Kris	DATE 23-10-06	DWG. NAME : GENERAL ARRANGEMENT	
APPROVED			DWG. NO. : AN-3791-GA08	
			SHEET NO: 1 OF 1	
THE ORIGINAL AND ALL COPIES OF THIS DRAWING TOGETHER WITH THE COPYRIGHT THEREOF ARE THE SOLE PROPERTY OF R.P.E. PTE. LTD. SINGAPORE				