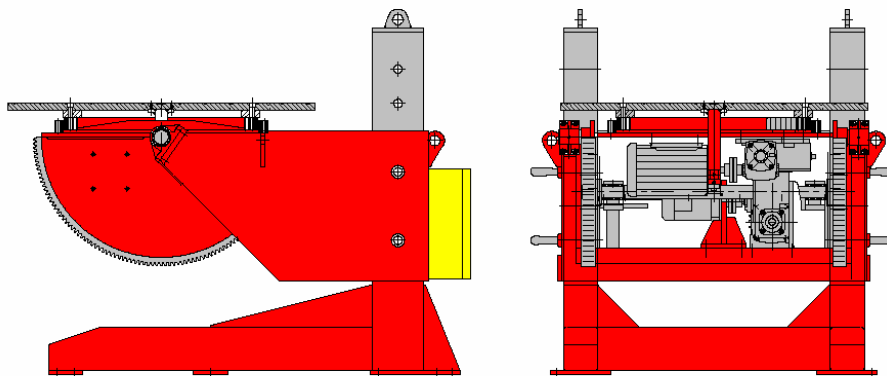




Specification Data
Positioners
Capacity : 10 Tonnes
Adjustable Height
Model: RP10TS

A&N Positioner Model RP10TS Series is a 10 metric tonne capacity designed to give a maximum positioning benefit by using tilt and rotation of the table for easy positioning of the workpiece. Two robust columns permits the operator to adjust the vertical height manually in increments of 150 mm per slot/pitch to give a minimum table height of 1350mm up to maximum table height of 1950mm. The table is machined with four radial slots for anchor bolts and centric marking on the table and is powered driven by AC motor controlled by the latest inverter control box fitted with remote pendant control to provide stop/start, forward/reverse, tilt and variable speed control. Tilt movement is electrically power driven by 4.0Kw AC motor with Dynamic Braking through the reduction gearbox. Earth connections are made through a rotary earth clamp to ensure good earthing to the welding power source.



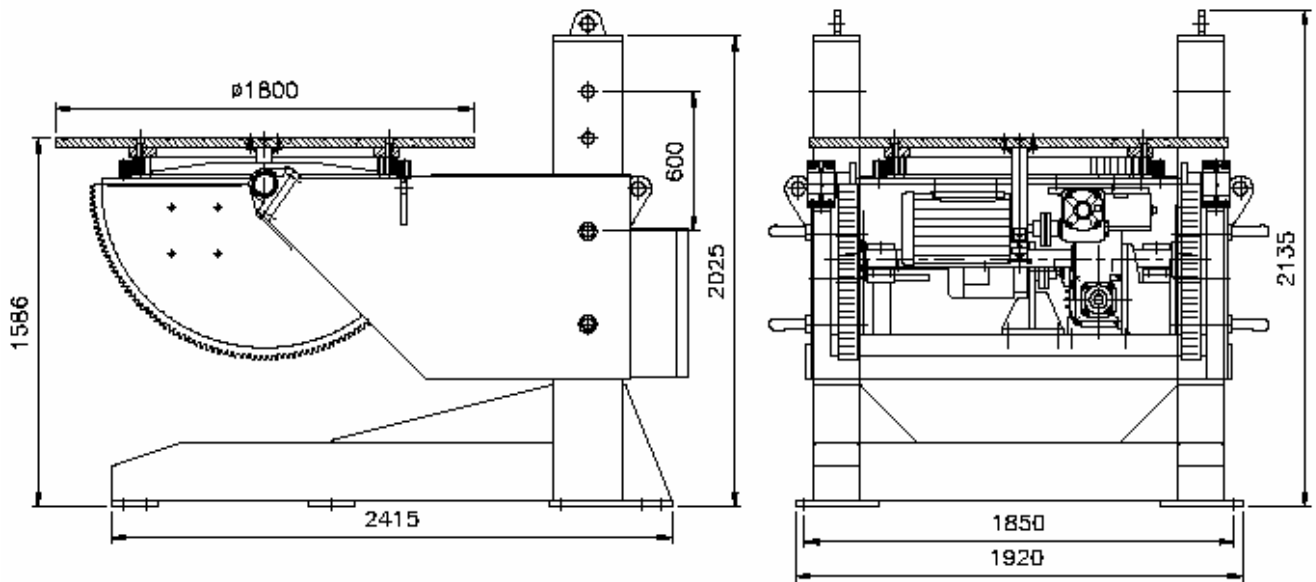
Specifications

Model:	RP10TS- FA-D1800
Table Size:	Diameter of 1800mm
Pendant Control:	24VAC circuit, push button with 6metre cable
Input voltage:	400V/3phase/16amps/50Hz (Specify voltage requirement when ordering)
Turning Capacity:	10-metric ton at 300mm (refer load chart)
Rotation Speed:	0.08 to 0.8rpm
Tilting Capacity:	10-metric ton at 300mm (refer load chart)
Tilt Range:	0 to 135 Degrees
Tilt Speed:	135 Degree at 110second
Rotation Drive Motor:	4.0 Kw motor
Rotation Drive Control:	4.0 Kw AC inverter
Tilt Drive Motor:	4.0 Kw c/w brake

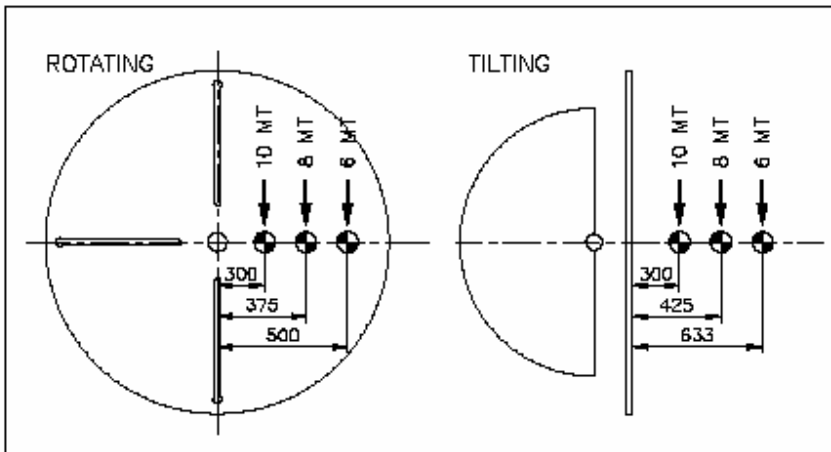
..... www.anplant.com

RP10TS Series (10 Tonne)

Dimensions



Load Chart



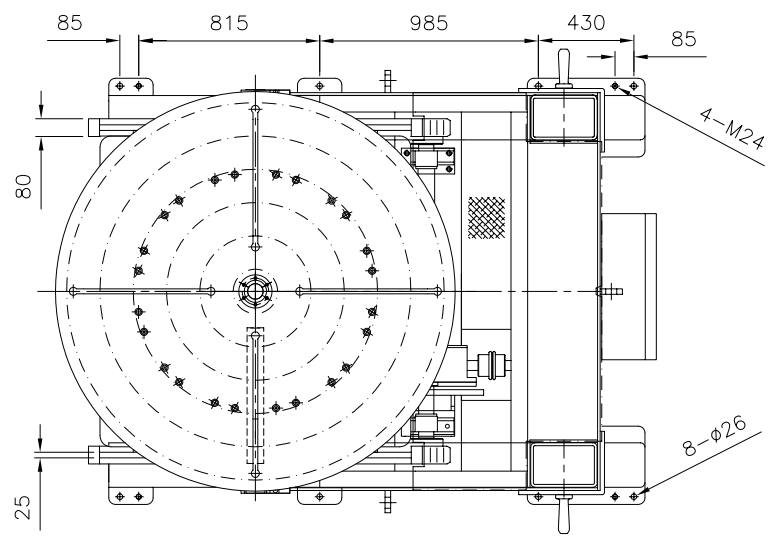
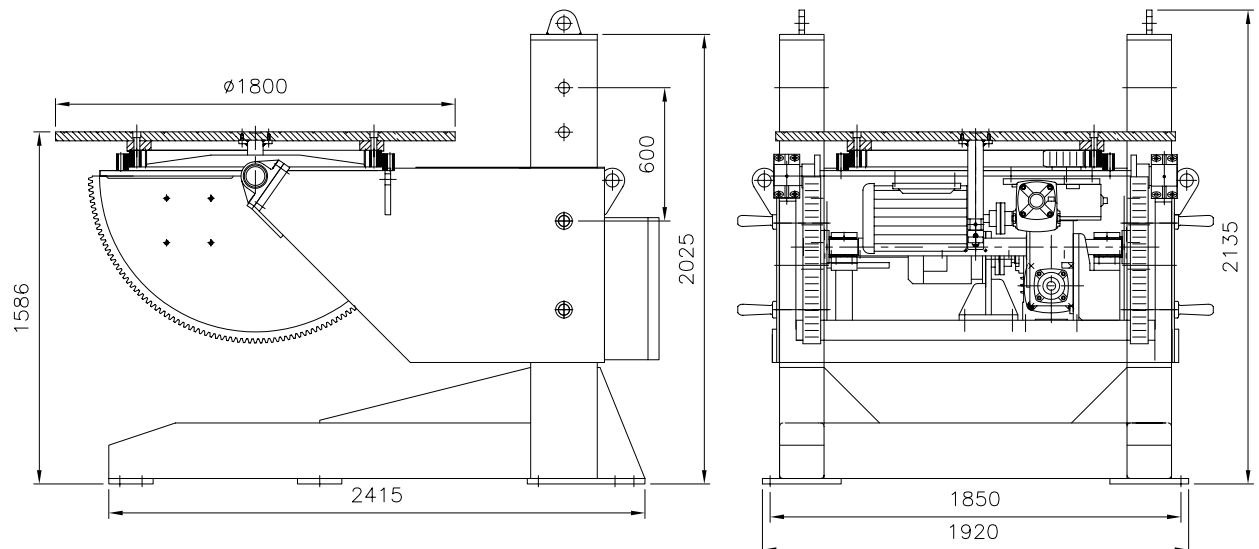
Optional Item

Following optional items are available and have to be factory installed:-

- Encoder
- Tachometer
- Foot Switch

..... www.anplant.com

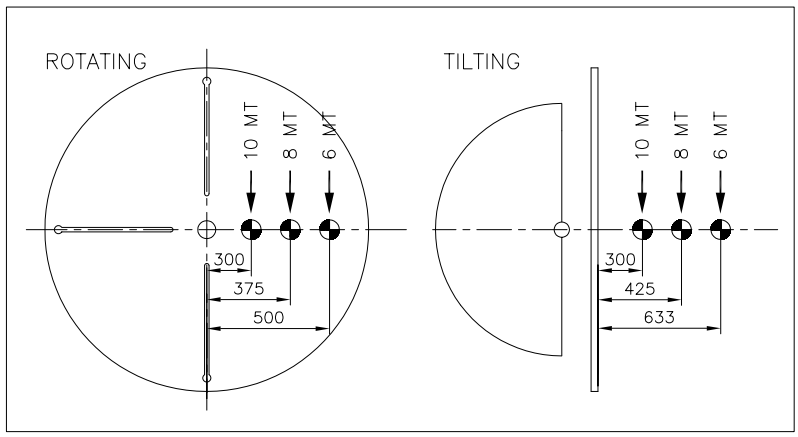
RP10TS Series (10 Tonne)



Specification for Positioner

1	Model	RP10TS-EA-D1800
2	Capacity (Turning)	10MT at 300mm
3	Capacity (Tilting)	10MT at 300mm
4	Tilt Range	0° to 135°
5	Vertical Adjustment	600mm (Manual)
6	Rotation Speed	0.08~0.8rpm (running at 5~50Hz)
7	Tilt Speed	135° in 110sec (running at 50Hz)
8	Electrical Panel	Yes
9	Power Supply	400V-3P-50/60Hz
10	Control Voltage	24Vac/dc
11	Control Means	Via push button pendant c/w 10m cable
12	Rotation Drive Motor	1x 4kW c/w Force Cooling
13	Tilt Drive Motor	1x 4kW c/w Brake
14	Earthing	1000A
15	Surface Preparation	Gritblast to SA2.5
16	Painting	2 coats Zinc Phosphate, 1 coat Polyurethane
17	Colour	RAL 3003 Red
18	Qty	T.B.A

Load Chart



ALL DIMENSIONS IN MM, UNLESS OTHERWISE SPECIFIED.

A&N PLANT ROTATORS - COLUMN BEAMS - POSITIONERS			PROJECT/MODEL : RP10TS-EA-D1800	
CLIENT : -			SCALE: N.T.S. REVISION: 0 SHEET NO: 1 OF 1	
DRAWN Kris	NAME Kris	DATE 07-06-05		
APPROVED			DWG. NO. : SD-RP10TS-EA-D1800	
THE ORIGINAL AND ALL COPIES OF THIS DRAWING TOGETHER WITH THE COPYRIGHT THEREOF ARE THE SOLE PROPERTY OF R.P.E. PTE. LTD. SINGAPORE				