



Specification Data
Conventional Rotators
Capacity : 200/200 tonnes
MODEL: PRS200/200DM

A&N rotators are a robust heavy duty design built to withstand the harsh and rugged environments expected in the welding and fabrication industry. Our proven design uses 580mm diameter 350mm width, steel wheels crowned and hardened mounted onto a cast steel drum for durability and superior traction.

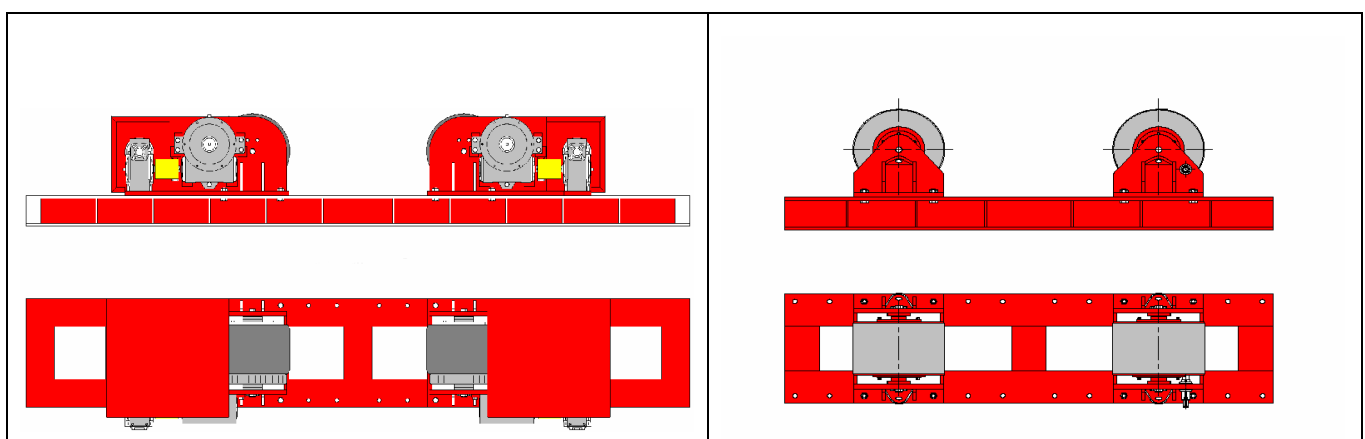
The powered drive unit drives all wheels synchronized using the AC gear motors via the latest inverter control. A hand held low voltage control pendant on a 15-metre cable provides the operator with full control of the rotator including a potentiometer for varying the speed, forward/reverse and stop.

The rotator has a standard 3100mm skid and can accommodate vessel diameters ranging from 410mm to 8306mm. All **A&N** rotators are grit blasted to SA 2.5 for all structural steel and polyurethane paintwork ensuring that your investment provides you with many years of reliable, trouble-free use.

The idler roll has the same dimension to match the powered drive unit. See GA drawing attached.

Power rolls specifications
Fitted with Steel Wheels

Model:	PRS 200/200DM
Load Capacity:	200 Metric ton (1 power & 1 idler)
Turn Capacity:	200 metric ton (1 power)
Roll Speed:	130 to 1295 mm/min
Vessel diameter:	Min 410mm to Max 8306 mm (6000mm @ 55 degree included angle)
Incoming supply:	400V/3Phase/32Amps/50/60/hz. (Specify input voltage when ordering)
AC Inverter:	7.5Kw inverter control box
Motor rating:	2 x 4KW
Control voltage:	DC 24 Volt control circuit.
Weight:	Drive Unit – 3310kgs Idler Unit – 1950kgs



..... www.anplant.com

PRS200/200DM (200 Tonne) (Steel Wheeled)

Guidelines for Vessel Diameter in mm (D)

CC (mm)	Included Angle, θ (in deg)												
	30	35	40	45	50	55	60	65	70	75	80	85	90
700	2045	1668	1387	1169	996	856	740	643	560	490	429	376	330
1100	3590	2998	2556	2214	1943	1722	1540	1387	1258	1147	1051	968	896
1500	5136	4328	3726	3260	2889	2589	2340	2132	1955	1804	1674	1560	1461
1900	6681	5658	4895	4305	3836	3455	3140	2876	2653	2461	2296	2152	2027
2300	8227	6989	6065	5350	4782	4321	3940	3621	3350	3118	2918	2744	2593
2700	9772	8319	7234	6395	5729	5187	4740	4365	4047	3775	3540	3337	3158
3100	11317	9649	8404	7441	6675	6054	5540	5110	4745	4432	4163	3929	3724

Vessel Clearance from Skid in mm (C)

CC (mm)	Included Angle, θ (in deg)												
	30	35	40	45	50	55	60	65	70	75	80	85	90
700	409	401	393	385	377	369	361	353	345	336	328	319	310
1100	383	370	358	346	333	320	308	295	282	268	255	241	227
1500	356	340	323	306	289	271	254	236	219	200	182	163	144
1900	330	309	287	266	244	223	200	178	155	133	109	86	61
2300	304	278	252	226	200	174	147	120	92	65	36	8	-21
2700	277	247	217	186	156	125	93	62	29	-3	-36	-70	-104
3100	251	216	182	147	111	76	40	3	-34	-71	-109	-148	-187

Overall Vessel Height in mm (H)

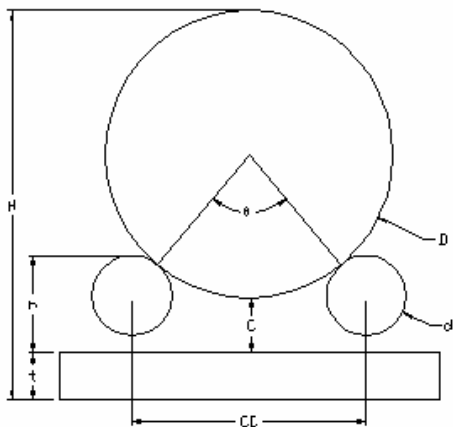
CC (mm)	Included Angle, θ (in deg)												
	30	35	40	45	50	55	60	65	70	75	80	85	90
700	2754	2369	2080	1855	1674	1525	1401	1296	1205	1126	1057	995	940
1100	4273	3668	3214	2860	2576	2343	2148	1982	1839	1715	1606	1509	1423
1500	5792	4968	4348	3866	3478	3160	2894	2668	2474	2304	2156	2024	1906
1900	7311	6267	5483	4871	4380	3977	3640	3354	3108	2894	2705	2538	2389
2300	8830	7567	6617	5876	5282	4795	4387	4040	3742	3483	3255	3052	2871
2700	10349	8866	7751	6882	6184	5612	5133	4727	4377	4072	3804	3567	3354
3100	11868	10166	8885	7887	7087	6429	5880	5413	5011	4661	4354	4081	3837

Note:

1. This chart is applicable to ROMAR ROTATOR using diameter 580 mm wheels.
2. Recommended Included Angle should be greater the 45 degree unless vessel is true concentric.
3. Shaded portion is not recommended

..... www.anplant.com

PRS200/200DM (200 Tonne) (Steel Wheeled)



Roller Dia. (d) = 580 mm
 Roller Ht. from Skid (h) = 640 mm
 Skid Ht. (t) = 203 mm

Ordering Information and system checklist

Equipment	Part Number	Description	Qty	Price
Rotator	PRS200/200D M-	200-metric ton loading capacity / 200-metric ton turning capacity		
Built-in with	EA- FA-	3-phase AC motor, Pendant control with 15m cable. 3-phase AC motor, Pendant control with 15m cable and foot switch.		
Skid Length Center to Center	2300- 2700- 3100-	Skid Frame center to center 2300mm(C-C) Skid Frame center to center 2700mm(C-C) Skid Frame center to center 3100mm(C-C)		

Optional item

Devices	AC- ACM- Y-	Anti-creep device manual Anti-creep device motorized Lead-screw type C-C adjustment		
Additional Idler roll	IR200-2300 IR200-2700 IR200-3100	Skid Frame center to center 2300mm(C-C) Skid Frame center to center 2700mm(C-C) Skid Frame center to center 3100mm(C-C)		
Travel car	TC- TCM-	Travel car Manual Travel car Motorized		

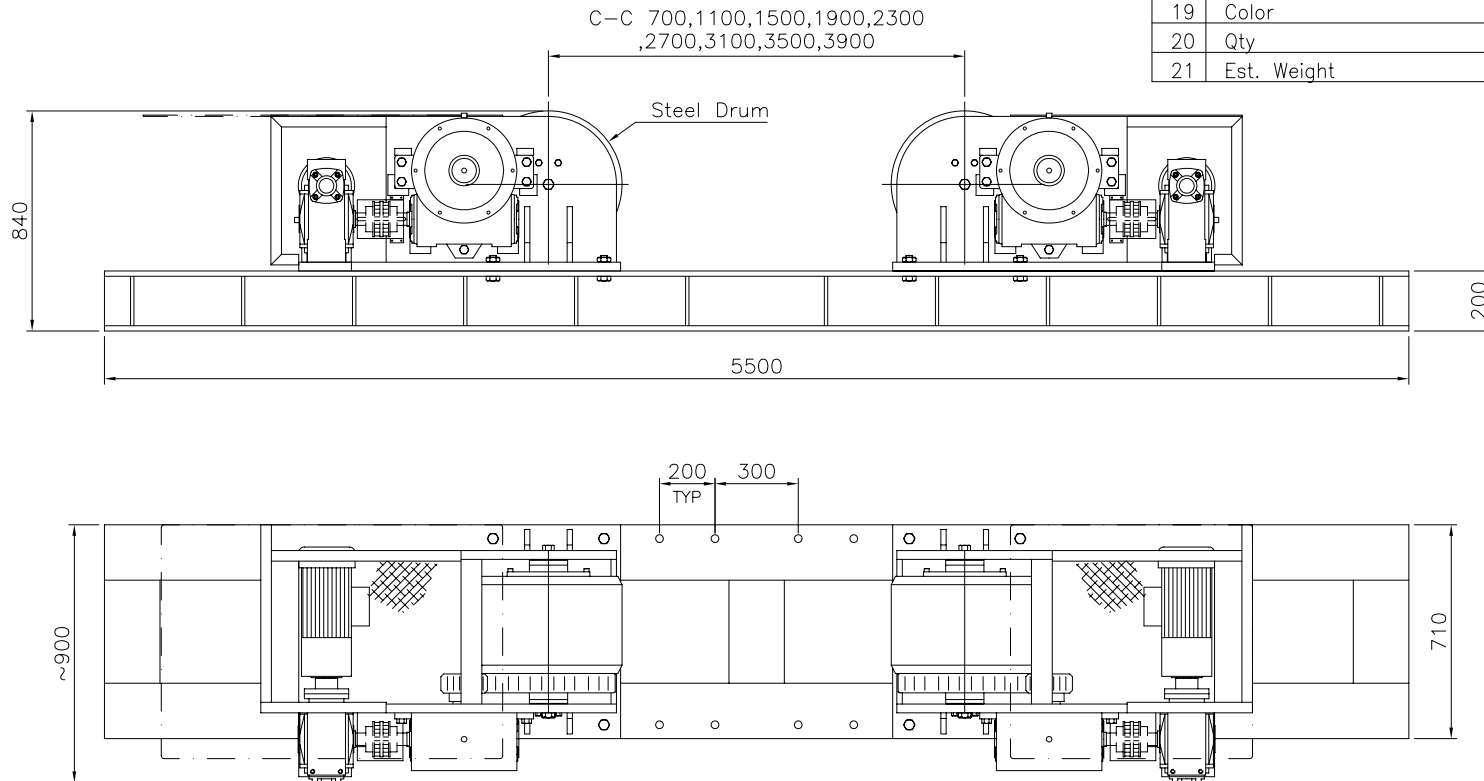
We reserve the right to alter specifications without prior notice

..... www.anplant.com

PRS200/200DM (200 Tonne) (Steel Wheeled)

Specification for Rotator

1	Model	PRS200/200DM-XA-3900
2	Capacity (Loading)	100 TON
3	Capacity (Turning)	200 TON
4	Vessel Size (Min.)	ø410mm at 90° Included Angle
5	Vessel Size (Max.)	ø5620mm at 60° Included Angle
6	Drum Type and Size	Steel, ø580x250mm
7	Electrical Panel	No
8	Roller Speed	144-1443mm/min at 5-50Hz
9	Incoming Supply	415-3P-50Hz
10	Control Voltage	N.A.
11	Roller Drive Control	N.A.
12	Control Means	N.A.
13	Roller Drive Motor	2 x AC 4KW c/w Force Cooling
14	Forced Cooling Fan Supply	415V-3P-50Hz
15	Travelcar (Bogie)	N.A.
16	Travelcar Speed	N.A.
17	Surface Preparation	Gritblast to SA2.5
18	Painting	2 coats Zinc Phosphate, 1 coat Polyurethane
19	Color	RAL3003 Red
20	Qty	T.B.A.
21	Est. Weight	5200 Kg

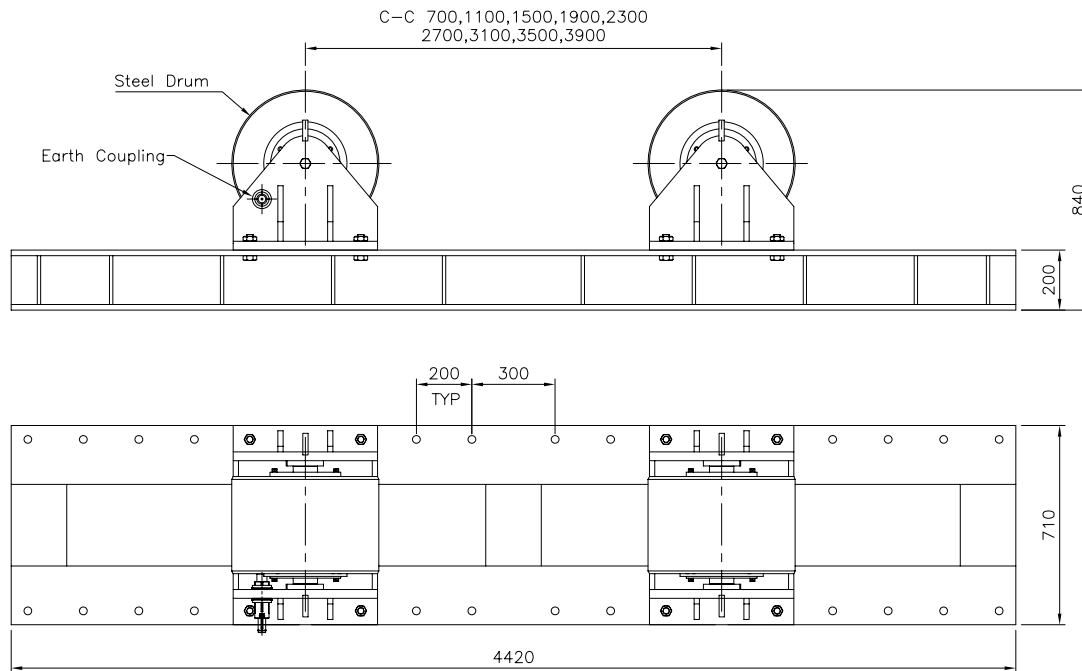


ALL DIMENSIONS IN MM, UNLESS OTHERWISE SPECIFIED.

A&N PLANT <small>ROTATORS - COLUMN BOOMS - POSTIONERS</small>			PROJECT/MODEL :		PRS200/200DM-XA-3900
			CLIENT :		-
DRAWN	NAME	DATE	DWG. NAME : ROTATOR GENERAL ARRANGEMENT		SCALE: N.T.S.
	Kris	24-12-06			REVISION: 0
APPROVED			DWG. NO. : SD-PRS200/200DM-XA-3900		SHEET NO: 1 OF 1
<small>THE ORIGINAL AND ALL COPIES OF THIS DRAWING TOGETHER WITH THE COPYRIGHT THEREOF ARE THE SOLE PROPERTY OF R.P.E. PTE. LTD. SINGAPORE</small>					

Specification for Rotator

1	Model	IRS200-3900
2	Capacity (Loading)	100 metric tons
3	Capacity (Turning)	N.A.
4	Vessel Size (Min.)	ø410mm at 90° Included Angle
5	Vessel Size (Max.)	ø11397mm at 30° Included Angle ø7520mm at 45° Included Angle ø5620mm at 60° Included Angle
6	Drum Type and Size	Steel, ø580x250mm
7	Electrical Panel	No.
8	Travelcar (Bogie)	N.A.
9	Travelcar Speed	N.A.
10	Surface Preparation	Gritblast to SA2.5
11	Painting	2 coats Zinc Phosphate, 1 coat Polyurethane
12	Color	RAL 3003 Red
13	Qty	T.B.A.
14	Est Weight	1950 Kg



ALL DIMENSIONS IN MM, UNLESS OTHERWISE SPECIFIED.

A&N PLANT <small>ROTATORS - COLUMN BOOMS - POSITIONERS</small>			PROJECT/MODEL :		
			IRS200-3900		
DRAWN			NAME	DATE	
Kris			Kris	24-12-06	
APPROVED			DWG. NAME :		SCALE:
			GENERAL ARRANGEMENT		N.T.S.
			DWG. NO. :		REVISION:
			SD-IRS200-3900		0
					SHEET NO:
					1 OF 1
<small>THE ORIGINAL AND ALL COPIES OF THIS DRAWING TOGETHER WITH THE COPYRIGHT THEREOF ARE THE SOLE PROPERTY OF R.P.E. PTE. LTD. SINGAPORE</small>					