



Specification Data
Conventional Rotators
Capacity: 10/15 Tonnes
MODEL: PR10/15DM

A&N rotators are a robust heavy duty design built to withstand the harsh and rugged environments expected in the world of welding and fabrication requirements. Our proven design uses 330mm diameter 228 width, replaceable hard-wearing polyurethane tyres mounted onto a cast steel drum for maximum durability and superior traction.

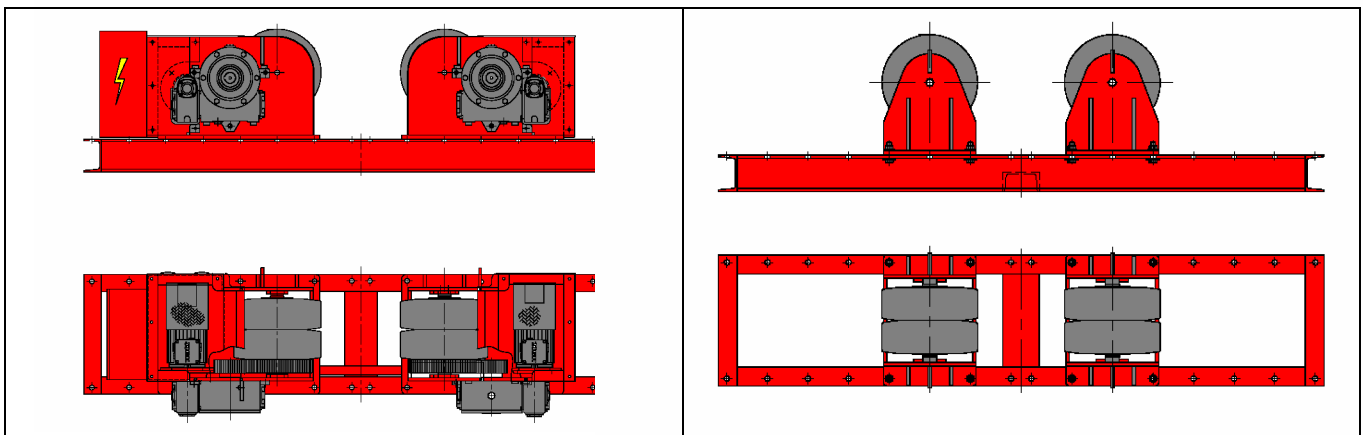
The powered drive unit drives all wheels synchronized using the AC gear motors via the latest inverter control. A hand held low voltage control pendant on a 15-metre cable provides the operator with full control of the rotator including a potentiometer for varying the speed, forward/reverse and stop.

All **A&N** rotators are grit blasted to SA 2.5 for all structural steel and polyurethane paintwork ensuring that your investment provides you with many years of reliable, trouble-free use.

The idler roll has the same dimensions to match the powered drive unit. See GA drawing attached.

Power rolls specifications

Model:	PR 10/15 DM
Load Capacity:	10 Metric ton (1 power & 1 idler)
Rotation Capacity:	15 metric ton (1 power)
Rotation Speed:	103 to 1030mm/min
Vessel diameter:	Min 165mm to Max 4240mm (at 17500mm C-C) @ 45 degree included angle
Incoming supply:	220/240V/1 Phase/50-60/hz. (Specify input voltage when ordering)
AC Inverter:	1.1KW inverter system
Motor rating:	0.55KW x 2
Control voltage:	24 Volt control circuit.
Weight:	520Kg Drive 190Kg Idler



..... www.anplant.com

PR10/15DM (10 Tonne)

Rotator Selection Chart ~ Standard 5 – 10MT

Guidelines for Vessel Diameter in mm (D)

CC (mm)	Included Angle, θ (in deg)												
	30	35	40	45	50	55	60	65	70	75	80	85	90
350	1022	834	693	584	498	428	370	321	280	245	214	188	165
630	2104	1765	1512	1316	1161	1034	930	842	768	705	650	602	561
910	3186	2696	2330	2048	1823	1641	1490	1363	1256	1165	1086	1017	957
1190	4268	3627	3149	2779	2486	2247	2050	1885	1745	1625	1521	1431	1353
1470	5349	4558	3968	3511	3148	2853	2610	2406	2233	2085	1957	1846	1749
1750	6431	5489	4786	4243	3811	3460	3170	2927	2721	2544	2392	2260	2145

Vessel Clearance from Skid in mm (C)

CC (mm)	Included Angle, θ (in deg)												
	30	35	40	45	50	55	60	65	70	75	80	85	90
350	392	388	384	380	376	372	368	364	360	356	351	347	343
630	374	367	359	352	345	338	331	323	316	308	300	293	285
910	355	345	335	324	314	304	293	282	272	261	249	238	227
1190	337	323	310	297	283	269	256	242	227	213	198	184	169
1470	318	302	285	269	252	235	218	201	183	166	147	129	111
1750	300	280	261	241	221	201	181	160	139	118	97	75	53

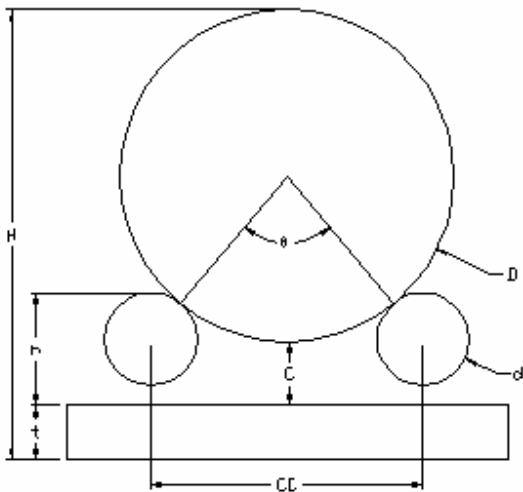
Overall Vessel Height in mm (H)

CC (mm)	Included Angle, θ (in deg)												
	30	35	40	45	50	55	60	65	70	75	80	85	90
350	1539	1347	1202	1090	999	925	863	810	765	725	691	660	632
630	2602	2256	1996	1793	1631	1497	1385	1291	1209	1138	1075	1020	970
910	3666	3166	2790	2497	2262	2069	1908	1771	1653	1550	1460	1380	1308
1190	4729	4076	3584	3201	2894	2641	2430	2251	2097	1963	1845	1740	1646
1470	5793	4985	4378	3905	3525	3213	2953	2731	2541	2375	2229	2100	1984
1750	6856	5895	5172	4609	4157	3786	3475	3212	2985	2787	2614	2460	2322

Note:

1. This chart is applicable to A&N ROTATOR using diameter 330mm (13") tyres.
2. Recommended Included Angle should **always** be greater than 45-degree unless vessel is true concentric.
3. Shaded portion is not recommended

..... www.anplant.com



Roller Dia. (d) = 330 mm
 Roller Ht. from Skid (h) = 415 mm
 Skid Ht. (t) = 125 mm

Ordering Information and system checklist

Equipment	Part Number	Description
Rotator	PR10/15DM	10 metric ton loading capacity /15 metric ton turning capacity
Built-in with	EA-	3-phase AC motor, Pendant control with 15m cable.
Base Frame Length Center to Center	1750	Base frame maximum center to center distance 1750mm(C-C)

Optional item

Devices	AC- ACM- Y-	Anti-creep device manual Anti-creep device motorized Lead-screw type C-C adjustment
Travel car	TC- TCM-	Travel car Manual Travel car Motorized

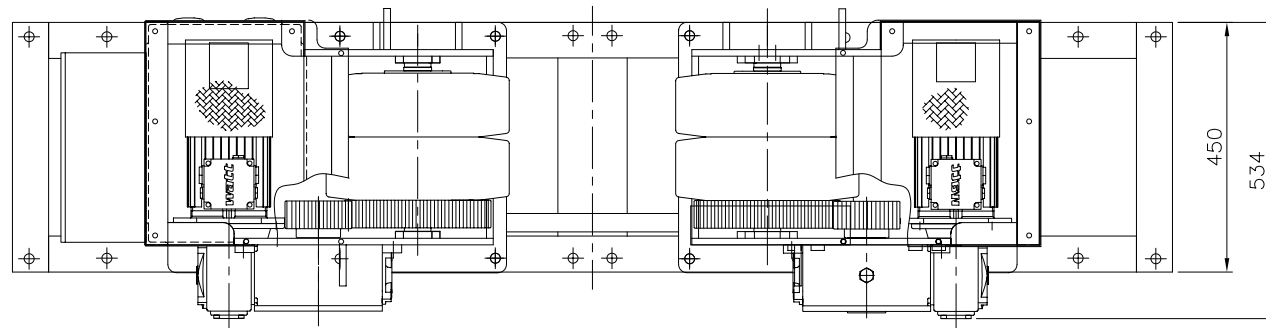
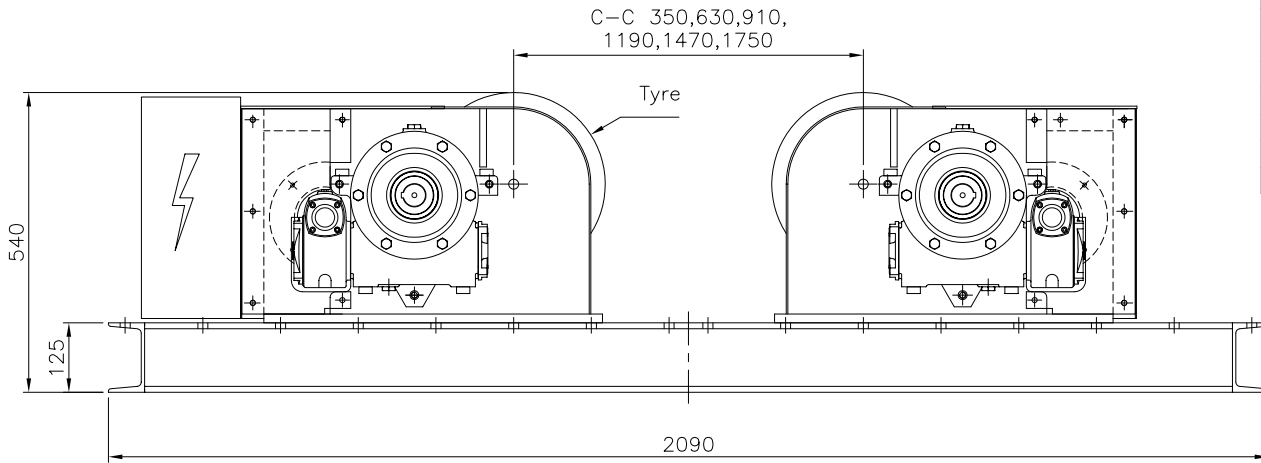
We reserve the right to alter specifications without prior notice

..... www.anplant.com


PR10/15DM (10 Tonne)

Specification for Rotator

1	Model	PR10/15DM-EA-1750
2	Capacity (Loading)	5Ton
3	Capacity (Turning)	15Ton
4	Vessel Size (Min.)	Ø165mm at 100° Included Angle
5	Vessel Size (Max.)	Ø6430mm at 30° Included Angle Ø4240mm at 45° Included Angle Ø3170mm at 30° Included Angle
6	Tyre type and size	Polyurethane, Ø13" x 4.5", 2 tyres per drum
7	Electrical Panel	Yes
8	Roller Speed	102-1020mm/min at 5-50Hz
9	Incoming Supply	380/480V-3P-50/60Hz
10	Control Voltage	24 Vac
11	Roller Drive Control	1.1kw Inverter
12	Control Means	Via Push button Pendant c/w 10m cable
13	Roller Drive Motor	2x0.55kw AC c/w force cooling
14	Travelcar (Bogie)	N.A.
15	Travelcar Speed	N.A.
16	Surface Preparation	Gritblast to SA2.5
17	Painting	2 coats Zinc Phosphate, 1 coat Polyurethane
18	Color	RAL 3003 Red
19	Qty	T.B.A.

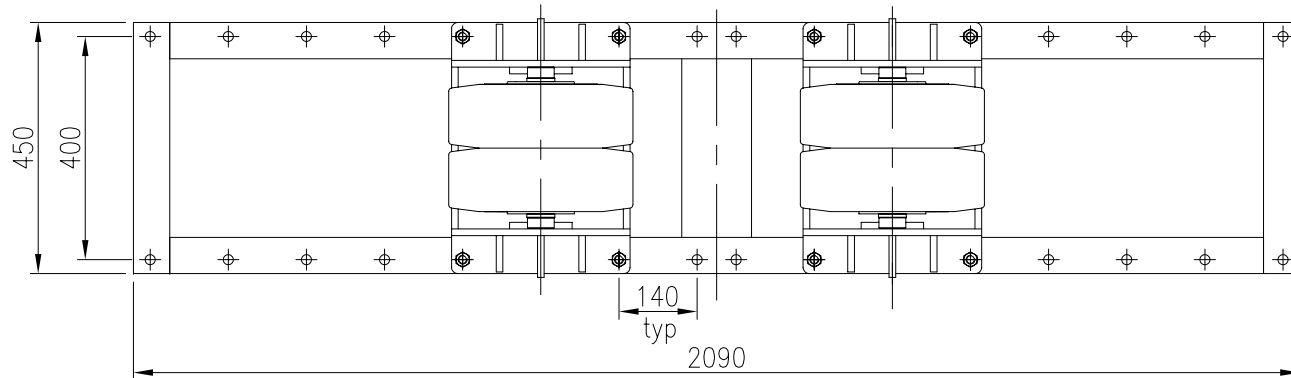
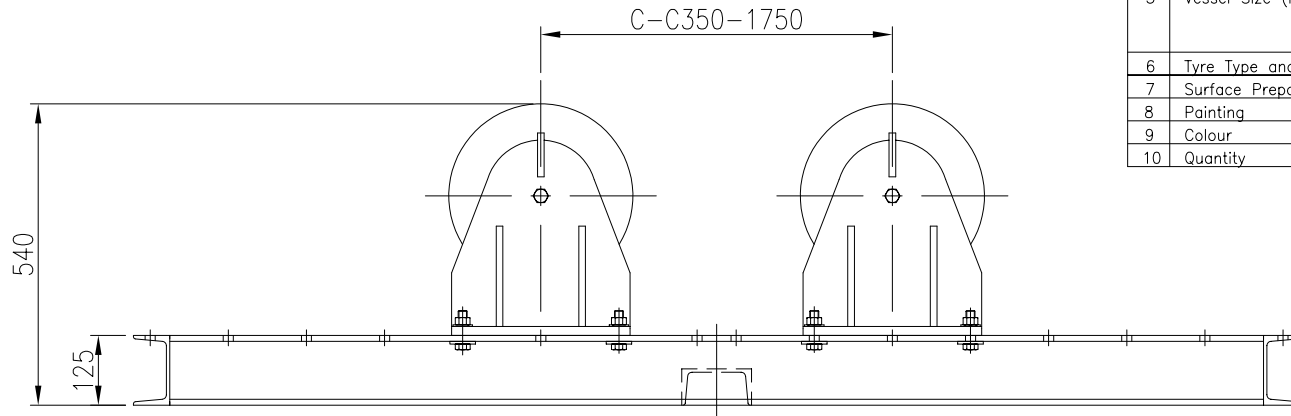



ALL DIMENSIONS IN MM, UNLESS OTHERWISE SPECIFIED.

 A&N PLANT <small>ROTATORS - COLUMN BOOMS - POSTIONERS</small>			PROJECT/MODEL : PR10/15DM-EA-1750	
DRAWN : NAME : Kris DATE : 06-01-06			CLIENT :	
APPROVED :			DWG. NAME : GENERAL ASSEMBLY	
DWG. NO. : SD-PR10/15DM-EA-1750			REVISION: 1 SHEET NO: 1 OF 1	
THE ORIGINAL AND ALL COPIES OF THIS DRAWING TOGETHER WITH THE COPYRIGHT THEREOF ARE THE SOLE PROPERTY OF R.P.E. PTE. LTD. SINGAPORE				

Specification for Rotator

1	Model	IR10-1750
2	Capacity (Loading)	5 Metric Ton
3	Capacity (Turning)	N.A
4	Vessel Size (Min.)	Ø165mm at 90° Included Angle
5	Vessel Size (Max.)	Ø6430mm at 30° Included Angle Ø4240mm at 45° Included Angle Ø3170mm at 60° Included Angle
6	Tyre Type and Size	Polyurethane, Ø13"x4.5" (2 tyres per drum)
7	Surface Preparation	Gritblast to SA2.5
8	Painting	2 Coats Zinc Phosphate, 1 Coat Polyurethane
9	Colour	RAL 3003 Red
10	Quantity	1 unit



 A&N PLANT <small>ROTATORS - COLUMN BOOMS - POSITIONERS</small>		PROJECT/MODEL : IR10-1750	
DRAWN		NAME Kris	DATE 13-12-05
APPROVED		CLIENT : -	
		DWG. NAME : GENERAL ARRANGEMENT	
		DWG. NO. : SD-IR10-1750	
<small>THE ORIGINAL AND ALL COPIES OF THIS DRAWING TOGETHER WITH THE COPYRIGHT THEREOF ARE THE SOLE PROPERTY OF R.P.E. PTE. LTD. SINGAPORE</small>			